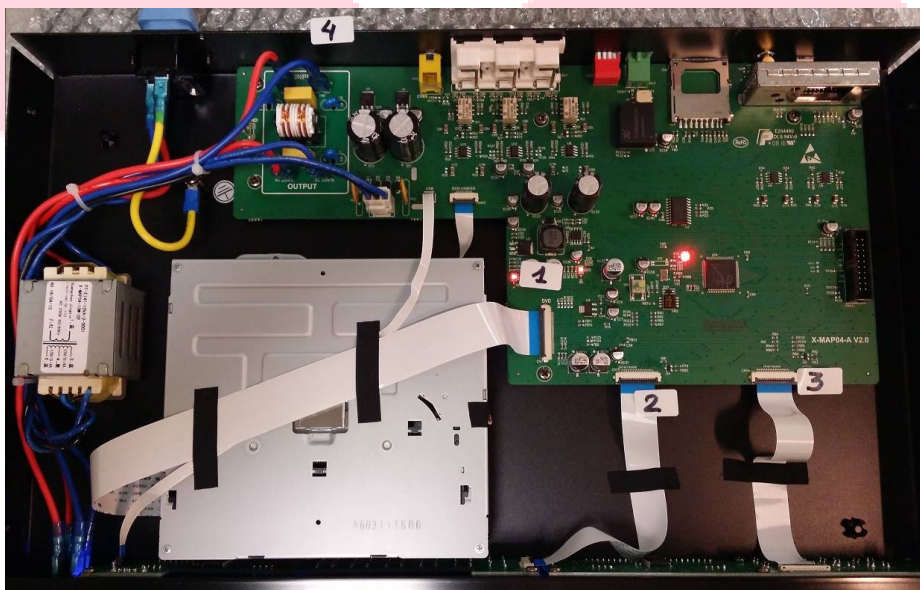


A. Testing device LDA RCD-21

1. Open the device (two screws Philips on right, two on left and two on rear)
2. Switch on the device.
3. Verify the displays with device on:



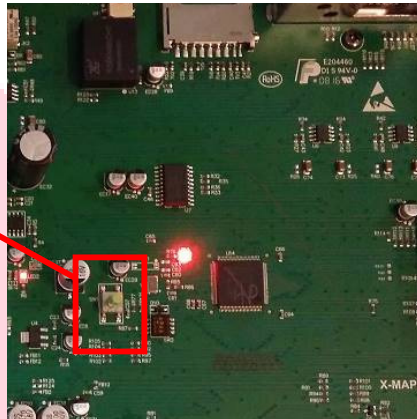
- a. Display of DVD is faulty (refer number "2" on the previous picture).
 - b. Display of Radio is faulty (refer number "3" on the previous picture).
 - c. Both display are faulty (refer to "2" and "3" on the previous picture).
4. Once you have detected the faulty display, we are going to test inside the device:
 - a. Check the if he bus "2" is well connected (refer to the next picture)
 - b. Check the if he bus "3" is well connected (refer to the next picture)
 - c. Check if led "1" are on (refer to the next picture) and check if the connectors "4" are well connected.



B. Reset button

If the device has the “LOAD” message continuous in screen, it could be a problem with memory card:

1. Once the device is open, to reset the memory card push the green button inside:



2. Wait for a ten seconds and switch off the device.
3. Wait for a five seconds and switch on.

Please for any other information contact with LDA Support Department

support@lda-audiotech.com